

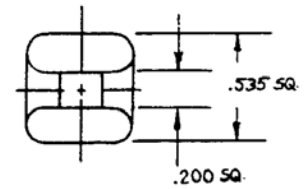
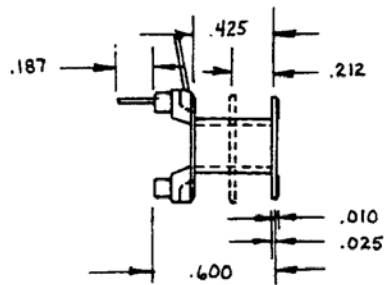
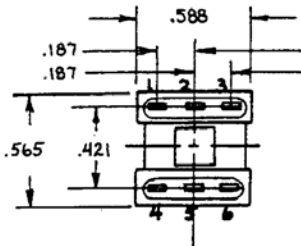
Part #'s: 1001
 1002

Part # With 6 Terminals	Sections	Standoffs
1001-01	1	No
1002-01	2	No

EI 187 x 3/16

Insulated Lead Slots

Uses Terminal #: 201

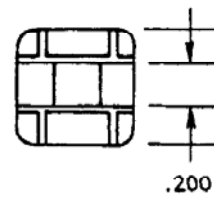
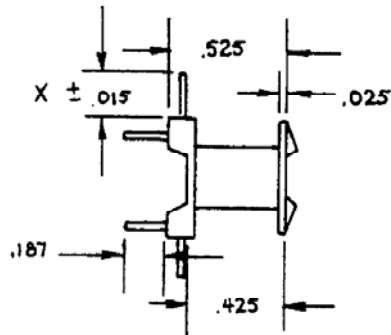
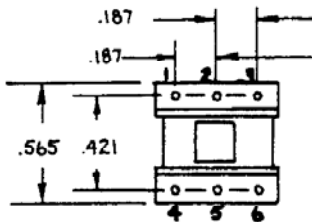


Part #: 1003

Part # With 6 Wires	Sections	Standoffs
1003-01	1	No

EI 187 x 3/16

Uses .025 Square Wire



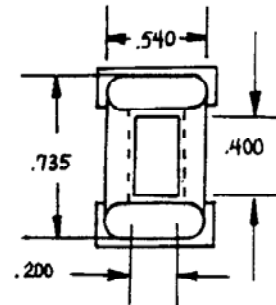
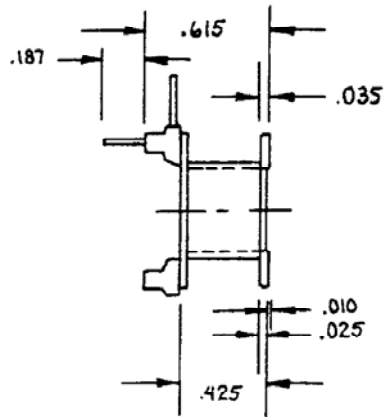
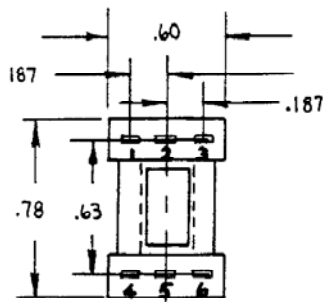
Part #: 1004

Part # With 6 Terminals	Sections	Standoffs
1004-01	1	No

EI 187 x 3/8

Insulated Lead Slots

Uses Terminal #: 201

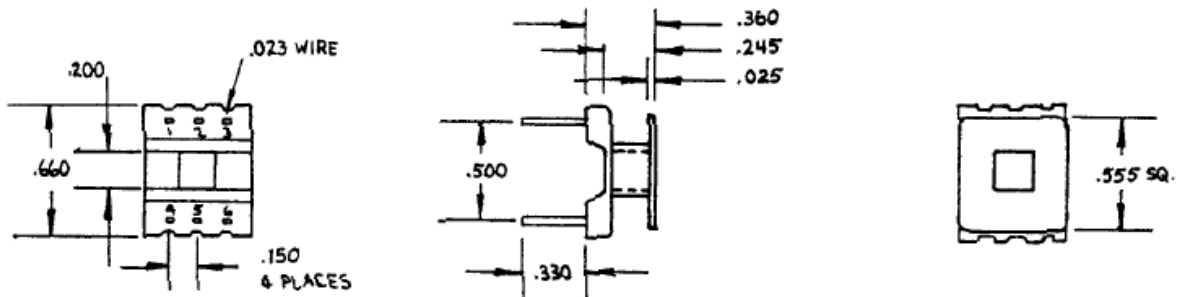


Part #: 1005

F14

Part # With 6 Wires	Sections	Standoffs
1005-01	1	No

Uses .023 Square Wire

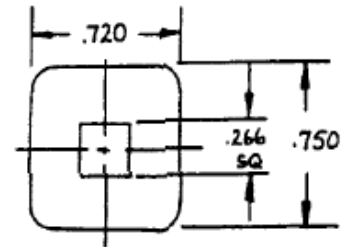
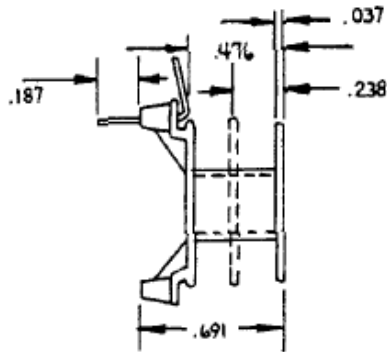
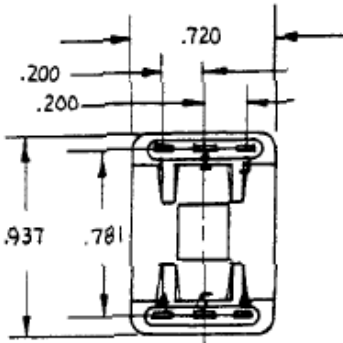


Part #'s: 1011
 1012

Part # With 6 Terminals	Sections	Standoffs
1011-01	1	No
1012-01	2	No

EE 24-25 x 1/4

Uses Terminal #: 201

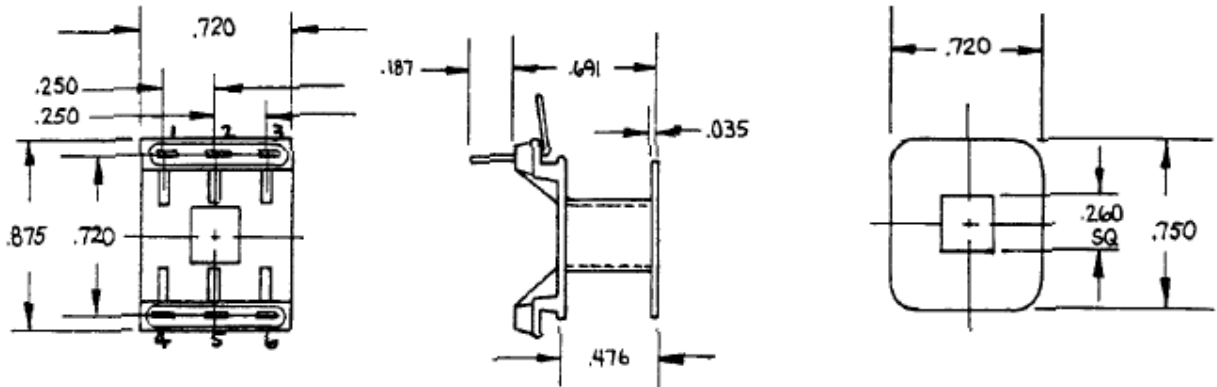


Part #: 1021

Part # With 6 Terminals	Sections	Standoffs
1021-01	1	No

EE 24-25 x 1/4

Uses Terminal #: 201



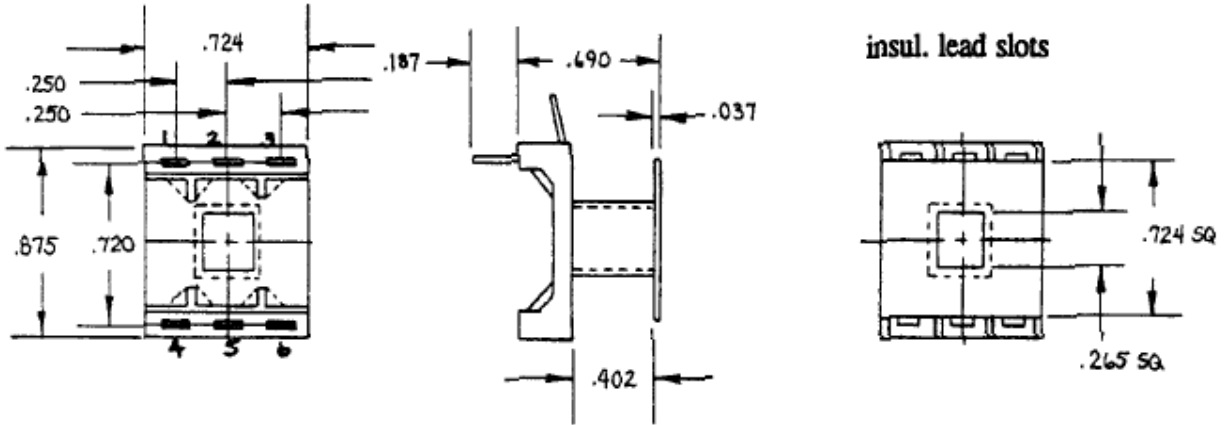
Part #: 1022

Part # With 6 Terminals	Sections	Standoffs
1022-01	1	No

EE 24-25 x 1/4

Insulated Lead Slots

Uses Terminal #: 201

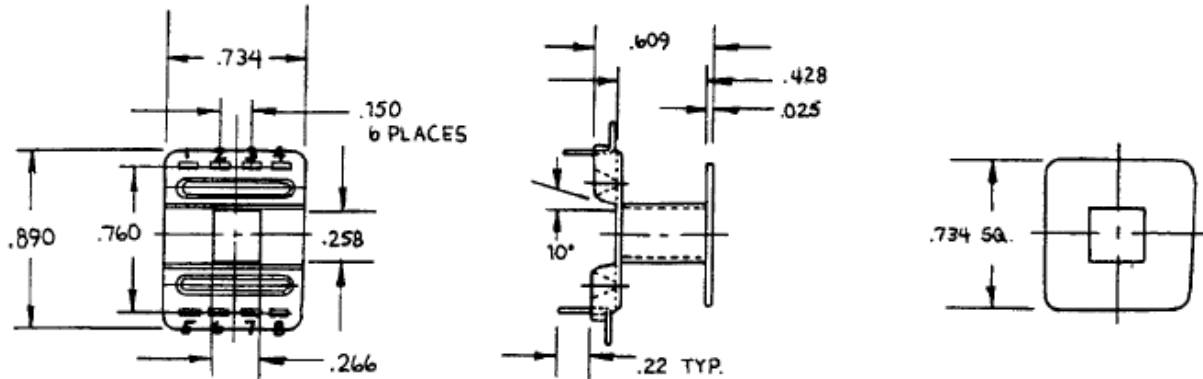


Part #: 1025

Part # With 8 Terminals	Sections	Standoffs
1025-01	1	No

EE 24-25 x 1/4

Uses Terminal #: 311

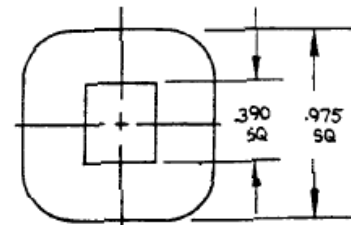
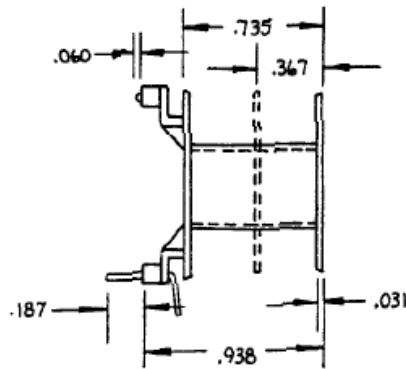
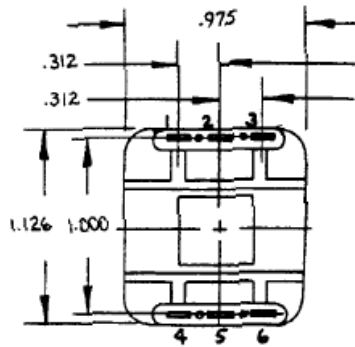


Part #'s: 1031
 1032
 1033
 1034

Part # With 6 Terminals	Sections	Standoffs
1031-01	1	No
1032-01	1	Yes
1033-01	2	No
1034-01	2	Yes

EI 375 x 3/8

Uses Terminal #: 201

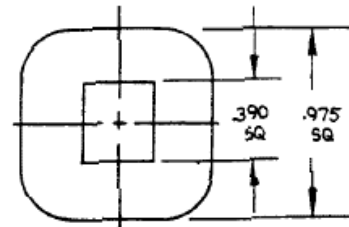
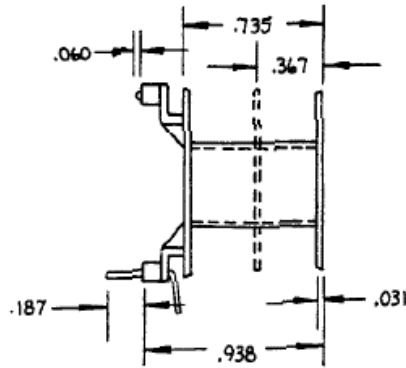
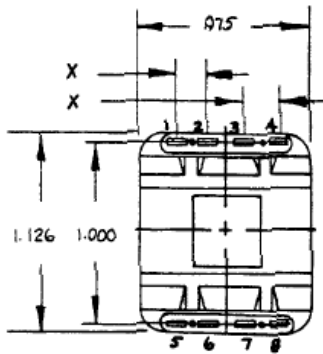


Part #'s: 1041
 1042
 1043
 1044
 1045
 1046
 1047
 1048

Part # With 8 Terminals	Sections	Standoffs	X Dimension
1041-01	1	No	.250
1042-01	1	Yes	.250
1043-01	2	No	.250
1044-01	2	Yes	.250
1045-01	1	No	.200
1046-01	1	Yes	.200
1047-01	2	No	.200
1048-01	2	Yes	.200

EI 375 x 3/8

Uses Terminal #: 201



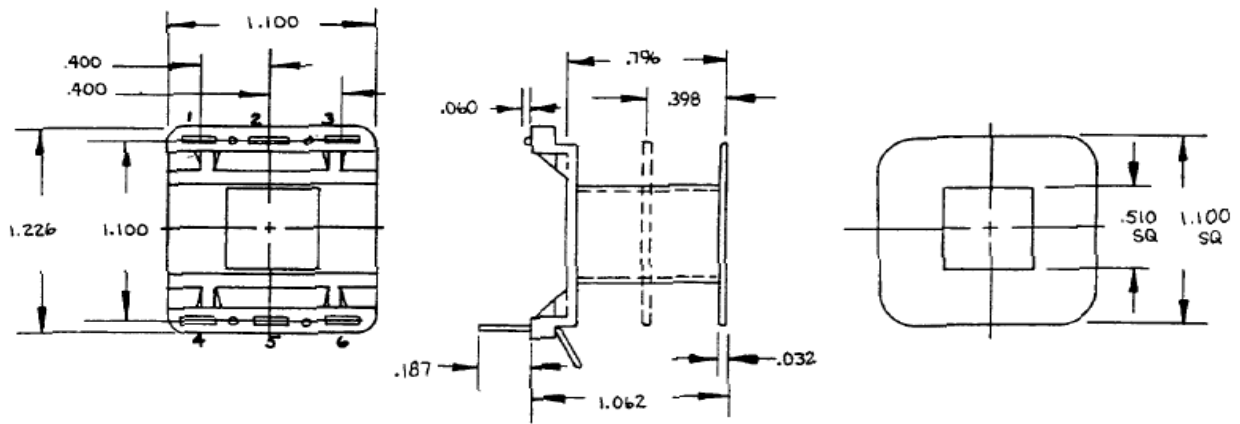
Part #'s: 1051
 1052
 1053
 1054

Part # With 6 Terminals	Sections	Standoffs
1051-01	1	No
1052-01	1	Yes
1053-01	2	No
1054-01	2	Yes

EI 21 x 1/2

Insulated Lead Slots

Uses Terminal #: 201



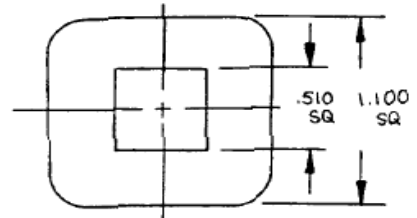
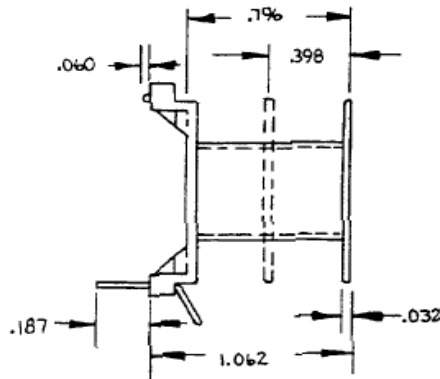
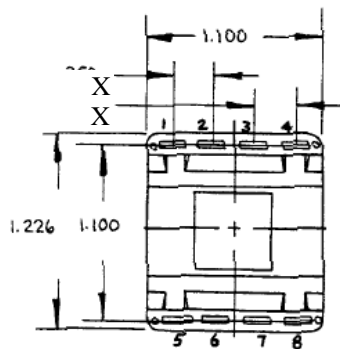
Part #'s: 1061
 1062
 1063
 1064
 1065
 1066
 1067
 1068

EI 21 x 1/2

Part # With 8 Terminals	Sections	Standoffs	X Dimension
1061-01	1	No	.250
1062-01	1	Yes	.250
1063-01	2	No	.250
1064-01	2	Yes	.250
1065-01	1	No	.267
1066-01	2	No	.267
1067-01	1	No	.275
1068-01	2	No	.275

Insulated Lead Slots

Uses Terminal #: 201



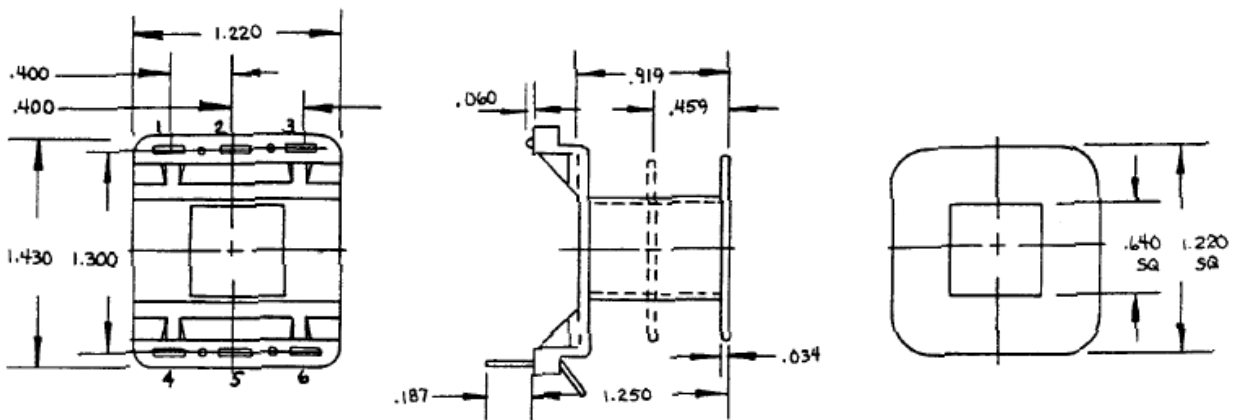
Part #'s: 1071
 1072
 1073
 1074

Part # With 6 Terminals	Sections	Standoffs
1071-01	1	No
1072-01	1	Yes
1073-01	2	No
1074-01	2	Yes

EI 625 x 5/8

Insulated Lead Slots

Uses Terminal #: 201



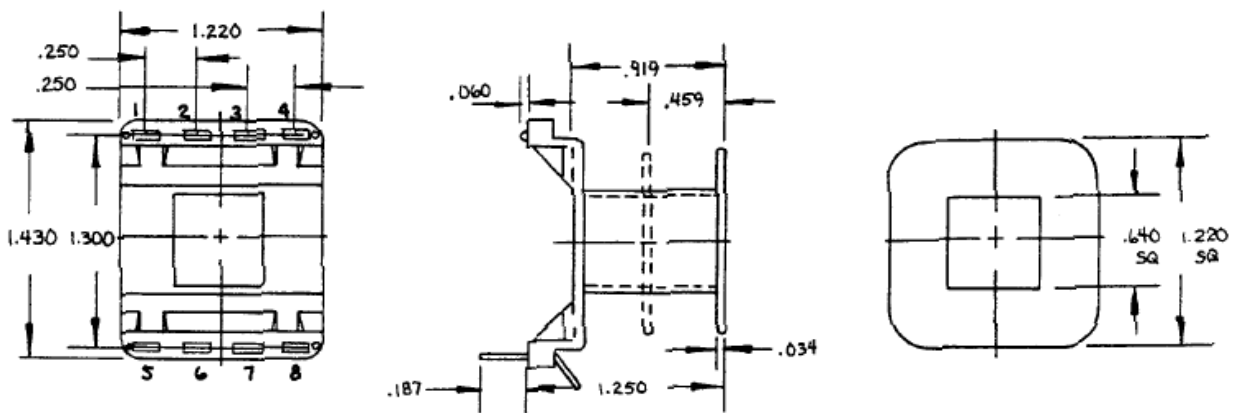
Part #'s: 1081
 1082
 1083
 1084

Part # With 8 Terminals	Sections	Standoffs
1081-01	1	No
1082-01	1	Yes
1083-01	2	No
1084-01	2	Yes

EI 625 x 5/8

Insulated Lead Slots

Uses Terminal #: 201



Part #'s: 1091
 1092

Part # With 10 Terminals	Sections	Standoffs
1091-01	1	No
1092-01	2	No

EI 625 x 5/8

Insulated Lead Slots

Uses Terminal #: 201

